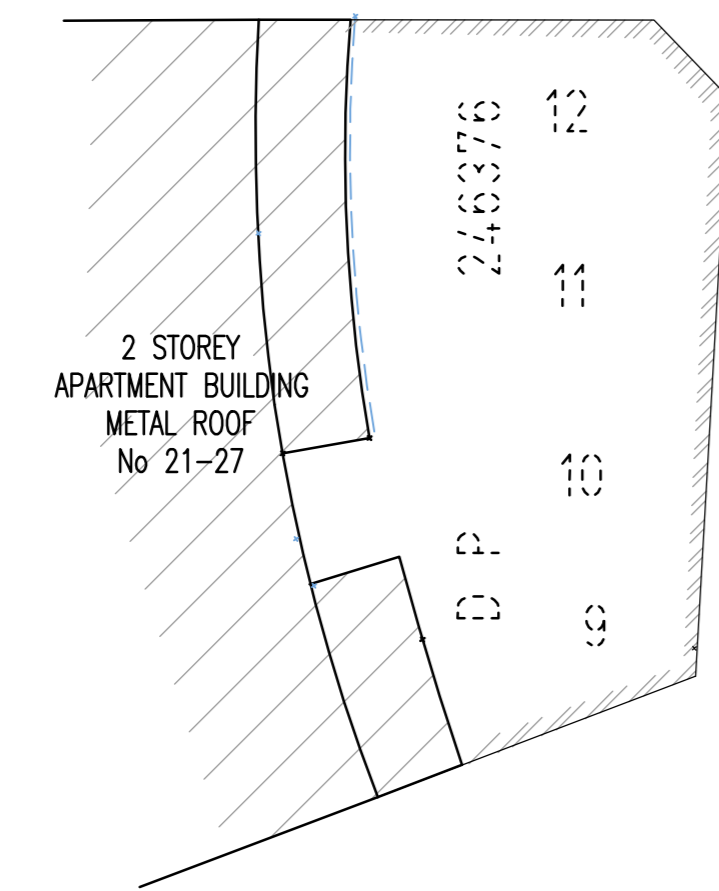


MGA CO-ORDINATES

No	EASTING	NORTHING
1	332 888.556	6 249 731.488
2	332 865.719	6 249 751.876



ISSUE	DATE	AMENDMENT	BY
2	08.04.2020	MGA CO-ORDINATES ADDED	MA/DM

- TYPICAL NOTES:
- ORDER OF LEVELS PER A242, RL A1.139 (A&D)
  - BOUNDARIES ARE ON MGA NORTH
  - NO BOUNDARY SURVEY HAS BEEN UNDERTAKEN
  - BOUNDARY SURVEYS HAVE BEEN COMPILED FROM TITLE AND/OR DEED INFORMATION SUPPLIED BY OWNERS OF LANDS INVOLVED
  - RELATIONSHIP OF IMPROVEMENTS AND DETAIL TO BOUNDARIES IS DIMENSIONAL ONLY AND SPECIFIC DETAILS OF CRITICAL WALL REQUIRE FURTHER SURVEY
  - SPRINGS SHOWN ARE BASED ON VISIBLE SURFACE INDICATORS EXPOSED AT THE DATE OF SURVEY AND THE BELIEVED SOURCE (DRAINAGE OF THE AREAS ADJACENT). ALL SPRINGS MUST BE VERIFIED ON SITE PRIOR TO ANY WORK BEING UNDERTAKEN. VERIS AUSTRALIA PTY LTD. IS NOT RESPONSIBLE FOR THE ACCURACY OR COMPLETENESS OF THE SERVICES SHOWN HEREIN.
  - ROOF, EAVE & GUTTER HEIGHTS HAVE BEEN OBTAINED BY AN INDIRECT METHOD AND ARE ACCURATE FOR PLANNING PURPOSES ONLY
  - ALONGSIDE BOUNDARIES AND DIMENSIONS HAVE BEEN PLOTTED FOR DIMENSIONAL PURPOSES ONLY AND SPECIFIC DETAILS OF CRITICAL WALL REQUIRE FURTHER SURVEY
  - THE DIMETER (AS SPREAD TO) & HEIGHT (H) OF EACH TREE IS INDICATIVE ONLY AND SPECIFIC DETAILS OF CRITICAL WALL REQUIRE FURTHER SURVEY
  - CONTIGUOUS AREAS IN POSSESSION OF THE TOWNSHIPS ONLY. SPOT LEVELS SHOULD BE USED IF DETAILED DESIGN IS TO BE UNDERTAKEN
  - CONTOUR INTERVAL 0.3M

LEGEND OF TYPICAL CODES

AL - ARCHITECTURAL EMBELLISHMENT	MED - METAL LEAF
AP - ALUMINIUM FIN	MS - NATURAL SURFACE
ARN - ANNING	OCC - STRUCTURE
BAC - BALCONY	OPT - OPTICS PIT
BAN - BOTTOM OF ANNING	PC - PAVEMENT CROSSING
BB - BOTTOM OF BANK	PD - PAVEMENT CROSSING
BOC - BOTTOM OF CHIMNEY	PERG - PERGOLA
BD - BOTTOM OF DOOR	PM - PITCHMENT MARK
BSY - BOTTOM OF DOOR	PP - POWER POLE
BF - BOTTOM OF FENCE	ROCK - ROCK
BSH - BOTTOM OF HANDRAIL	RLAY - RAILWAY
BSB - BOTTOM OF KESB	RM - ROOF FENCE
BU - BUILDING MARK	RR - ROOF FENCE
BSL - BOLLARD	RON - CONCRETE RAIL
BSR - BOTTOM OF ROOF	SIR - SPRIB
BSW - BRICK	SP - SPERM INSPECTION PIT
BST - BOTTOM OF RETAINING WALL	SLH - SLOPE LAMP HOLE
BS - BOTTOM OF WALL	SS - STATE SURVEY MARK
BW - BOTTOM OF WINDOW	SV - STOP VALVE
CH - CHIMNEY	SW - STOP WATER
CL - CENTRALINE	TRAC - TOP OF ARCH
CLD - CONCRETE LID	TRM - TOP OF ANNING
COL - COLUMN	TS - TOP OF BANK
COM - COMMUNICATIONS PIT	TSL - TELECOM PILLAR
CONC - CONCRETE	TCH - TOP OF CHIMNEY
CPT - CARPET	TD - TOP OF DOOR
D - DOOR	TEL - TELECOM PIT
DH - DRILL HOLE	TEP - TELECOM PILLAR
DM - DRILL HOLE & BRICKS	TF - TOP OF FENCE
DMW - DIMENWAY	THR - TOP OF HANDRAIL
ED - EDGE OF CONCRETE	TL - TRAFFIC ISLAND
EDC - EDGE OF DOOR	TK - TOP OF KESB
EDG - EDGE OF GARDEN	TL - TRAFFIC LIGHT
ELC - ELECTRICITY PIT	TP - TOP OF PARAPET
EP - EDGE OF PAVEMENT	TR - TOP OF ROOF
EX - EDGE OF ROAD	TRW - TOP OF RETAINING WALL
FL - FLOOR LEVEL	TS - TOP OF STEPS
FP - FINISHED FLOOR LEVEL	TR - TOP OF WALL
FS - FINISH POINT	TWN - TOP OF WINDOW
GE - GAS METER	UN - UNDERGROUND SERVICE
GH - GAS METER	UNB - UNDERGROUND SERVICE
HP - HIGH POWERED GAS	USB - UNDERGROUND SERVICE
HR - HANDRAIL	USE - UNDERGROUND SERVICE
HOB - HOIST	USE - UNDERGROUND SERVICE
IL - INSERT LEVEL	V - VOET
K - KERB	VEN - VENTHORN
LAN - LANTERN	VC - VEHICLE CROSSING
LP - LAMP POST	W - WINDOW
ME - MANHOLE	WM - WATER METER

LEGEND OF TYPICAL SERVICES

C - COMMUNICATIONS CABLE	RM - RECYCLED WATER
CMW - CERAMIC STONEMETER PIPE	RM - RIBBON WATER
E - UNDERGROUND ELECTRICITY CABLES	RM - RIBBON & WATER SERVICES
EC - UNDERGROUND ELECTRICITY & OPTIC CABLES	S - SINKER
FT - FIRE SERVICE	SO - SINKER OUTCALL
G - GAS LINE	SI - SHAVED TRENCH
GE - GAS LINE & ELECTRICITY CABLES	SM - SINKER WATER
ML - METAL BRICK BOND CABLES	SW - STONEMETER CREEK
NL - NATURAL GAS LINE	T - TELSTRA CABLES
OR - OPTIC CABLE	TO - TELSTRA & GAS CABLES
OPT - OPTIC CABLE	U - UNKNOWN SERVICE
PE - PRIVATE ELECTRICITY	UC - UNKNOWN SERVICE
PS - PRIVATE SEWER	UN - UNKNOWN SERVICE
PM - PRIVATE WATER	US - UNKNOWN SERVICE
	US - UNKNOWN SERVICE

- ALL UNDERGROUND SERVICE INFORMATION IN ACCORDANCE WITH GENERAL PROVISION AND SURFACE COVER OPTIC NOTES ON THE PLAN ARE APPROXIMATE ONLY
- ALL UNDERGROUND SERVICE INFORMATION HAS BEEN COMPILED FROM SERVICE AUTHORITY DATA PROVIDED BY THE AUTHORITIES
- THE LOCATION OF SERVICES BETWEEN SURVEYED POINTS (AS INDICATED) HAVE BEEN SHOWN DIMENSIONALLY ONLY UNLESS THE SERVICE PROVIDER PROVIDES THE EXACT LOCATION OF THESE SERVICES BETWEEN THE SURVEYED POINTS. ALL SERVICES MUST BE VERIFIED PRIOR TO ANY EXCAVATION OR WORK BEING UNDERTAKEN & SOIL MUST BE PROTECTED AT ALL TIMES TO PREVENT DAMAGE TO THE SERVICES
- ALL DIMENSIONAL INFORMATION, INCLUDING A PROJECT CONSULTANT MUST CONTACT THE SERVICE PROVIDER, IN ACCORDANCE WITH STANDARD TIA BEFORE YOU DO NOT PROCEED PRIOR TO UNDERMINING ANY WORK WITHIN THE SCOPE OF THE SERVICE, UNLESS YOU VERIFY THE POSITION OF THE SERVICE LINE.

REDUCTION RATIO 1:150

0 1 2 3 4 5 6 7 8 9 10 11 12 13 14 15

LENGTHS ARE IN METRES

CLIENT: NSW LAND & HOUSING CORP

TITLE No: 17 & 18/244897 REF: 201704

DATUM: A.M.D. ISSUE: 2

DATE OF SURVEY: 15.08.19 ISSUE DATE: 10.08.19

SURVEYOR: SC SHEET SIZE: A0

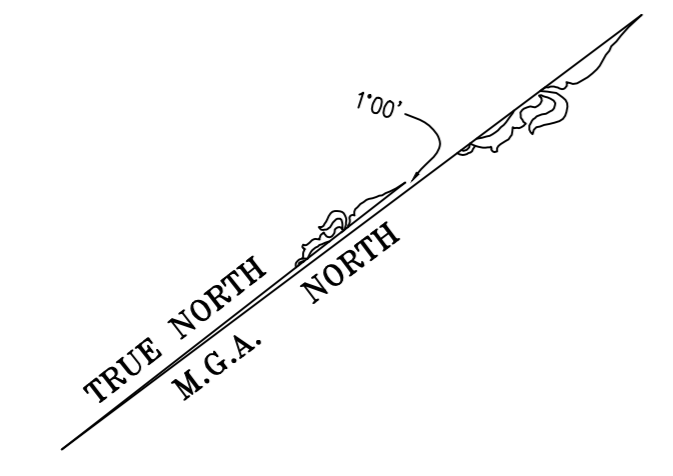
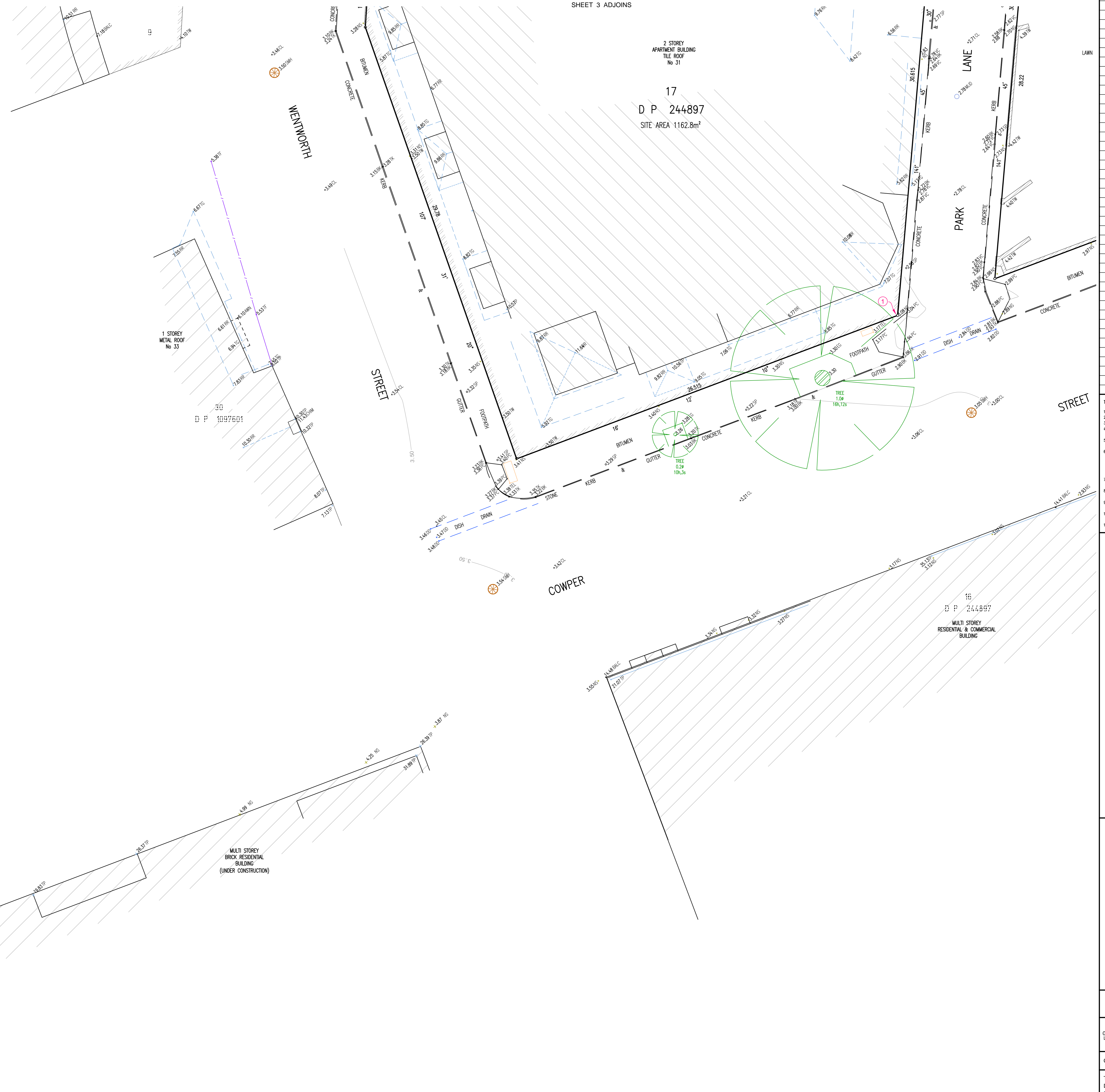
DRAFTER: PH SHEET 1 OF 6 SHEETS

PLAN OF DETAIL & LEVELS AT No 2 WENTWORTH PARK ROAD GLEBE

**veris** Veris Australia Pty Ltd  
 Suite 301, Level 3, 55 Holt Street  
 Surry Hills NSW 2012  
 PO Box 1807  
 Strawberry Hills NSW 2012  
 t: (02) 92124655  
 email: surryhills@veris.com.au  
 web site: www.veris.com.au

SEE SHEETS 2 - 6 FOR DETAIL





ISSUE	DATE	AMENDMENT	BY
2	08.04.2020	MCA CO-ORDINATES ADDED	MJ/DM

- TYPICAL NOTES:**
- ORDER OF LEVELS PER 4232, 4113 (4/4)
  - BOUNDARIES ARE ON MAIN NORTH
  - NO BOUNDARY SURVEY HAS BEEN UNDERTAKEN
  - BOUNDARIES & DIMENSIONS HAVE BEEN COMPILED FROM TITLE AND/OR DEED INFORMATION SUPPLIED BY DEPARTMENT OF LANDS NSW
  - RECONSTRUCTION OF APPROXIMATIONS AND DETAIL TO BOUNDARIES IS DIAGNOSTIC ONLY AND SPECIFIC DETAILS OF CRITICAL WALL REQUIRE FURTHER SURVEY
  - SPRINKLERS SHOWN ARE BASED ON WETTEST SURFACE INDICATORS EXCEPT AT THE DATE OF SURVEY AND THE RELEASE SERVICE (DRAINAGE) OF THE BARRICADES. ALL SERVICES MUST BE VERIFIED ON SITE PRIOR TO ANY WORK BEING UNDERTAKEN. VERIS AUSTRALIA PTY LTD WILL BE RESPONSIBLE FOR THE ACCURACY OR COMPLETENESS OF THE SERVICES SHOWN HEREON.
  - ROOF, EAVE & GUTTER HEIGHTS HAVE BEEN OBTAINED BY AN INDIRECT METHOD AND ARE ACCORDING TO DRAWING PURPOSES ONLY
  - ALONGSIDE BUILDINGS AND DWELLINGS HAVE BEEN PLOTTED FOR DIAGNOSTIC PURPOSES ONLY AND SPECIFIC DETAILS OF CRITICAL WALL REQUIRE FURTHER SURVEY
  - THE DIAMETER (Ø), SPREAD (S) & HEIGHT (H) OF EACH TREE IS INDICATIVE ONLY AND SPECIFIC DETAILS OF CRITICAL WALL REQUIRE FURTHER SURVEY
  - CONTOURS ARE AN INDICATION OF THE TERRAIN ONLY. SPOT LEVELS SHOULD BE USED IF DETAILED DESIGN IS TO BE UNDERTAKEN
  - CONTOUR INTERVAL 100 METER

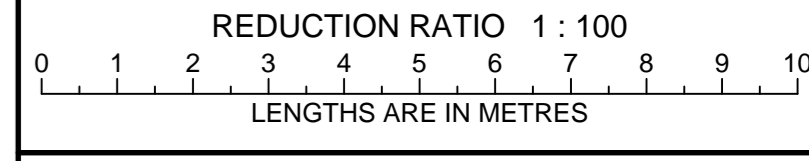
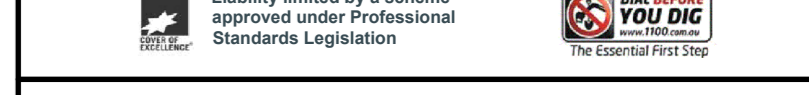
**LEGEND OF TYPICAL CODES**

AL - ARCHITECTURAL EMBELLISHMENT	MED - METAL LEAF
AP - ALIGNMENT PIN	MS - MANHOLE SURFACE
AW - AWNING	OCC - STRUCTURE
BAC - BALCONY	OPT - OPTIC PIT
BAN - BOTTOM OF ANNEX	PC - PAVING CROSSING
BB - BOTTOM OF BANK	PE - PESTICIDE CROSSING
BO - BOTTOM OF DRIVEWAY	PERG - PERGOLA
BS - BOTTOM OF DOOR	PM - PERMANENT MARK
BP - BOTTOM OF FENCE	PP - POWER POLE
BT - BOTTOM OF HANDRAIL	RA - RAIL
BU - BUTTRESS	RM - REFERENCE MARK
CA - CONCRETE	RO - ROOF
CB - CONCRETE BLOCK	RON - CONCRETE RAIL
CC - CONCRETE CURB	SAR - SERRATED
CD - CONCRETE DRIVE	SB - SKIN INSPECTION PIT
CE - CONCRETE EAVE	SC - SKIN LAMP HOLE
CF - CONCRETE FOOTING	SE - STATE STREET MARK
CG - CONCRETE GUTTER	SI - STOP POST
CH - CONCRETE HOLE	SK - SKIN WASTE
CI - CONCRETE INSULATION	SP - SIGN POST
CJ - CONCRETE JAMB	SV - STOP VALVE
CK - CONCRETE KERB	SW - STAIN WASTE
CL - CONCRETE LID	TA - TOP OF ARCH
CM - COMMUNICATIONS	TB - TOP OF ANNEX
CO - CONCRETE OPPOSITE	TC - TOP OF BANK
CP - CONCRETE PAVEMENT	TD - TOP OF DRIVEWAY
CQ - CONCRETE QUARRY	TE - TOP OF DRIVEWAY
CR - CONCRETE ROOF	TEP - TELEPHONE PILLAR
CS - CONCRETE SIDEWALK	TF - TOP OF DRIVEWAY
CT - CONCRETE TIE	TI - TOP OF DRIVEWAY
CU - CONCRETE UTILITY	TIL - TELEPHONE
CV - CONCRETE VALVE	TK - TOP OF KERB
CW - CONCRETE WALL	TL - TOP OF LIGHT
CX - CONCRETE WINDOW	TM - TOP OF MANHOLE
CY - CONCRETE YARD	TS - TRAFFIC SIGN
CA - CONCRETE ARCH	TR - TOP OF DRIVEWAY
CB - CONCRETE BANK	TT - TOP OF DRIVEWAY
CC - CONCRETE CURB	TU - TOP OF DRIVEWAY
CD - CONCRETE DRIVE	TV - TOP OF DRIVEWAY
CE - CONCRETE EAVE	TW - TOP OF DRIVEWAY
CF - CONCRETE FOOTING	TX - TOP OF DRIVEWAY
CG - CONCRETE GUTTER	TY - TOP OF DRIVEWAY
CH - CONCRETE HOLE	TZ - TOP OF DRIVEWAY
CI - CONCRETE INSULATION	UA - UNDERSIDE OF ANNEX
CJ - CONCRETE JAMB	UB - UNDERSIDE OF DRIVEWAY
CK - CONCRETE KERB	UC - UNDERSIDE OF DRIVEWAY
CL - CONCRETE LID	UD - UNDERSIDE OF DRIVEWAY
CM - COMMUNICATIONS	UE - UNDERSIDE OF DRIVEWAY
CO - CONCRETE OPPOSITE	UF - UNDERSIDE OF DRIVEWAY
CP - CONCRETE PAVEMENT	UG - UNDERSIDE OF DRIVEWAY
CQ - CONCRETE QUARRY	UH - UNDERSIDE OF DRIVEWAY
CR - CONCRETE ROOF	UI - UNDERSIDE OF DRIVEWAY
CS - CONCRETE SIDEWALK	UJ - UNDERSIDE OF DRIVEWAY
CT - CONCRETE TIE	UK - UNDERSIDE OF DRIVEWAY
CU - CONCRETE UTILITY	UL - UNDERSIDE OF DRIVEWAY
CV - CONCRETE VALVE	UM - UNDERSIDE OF DRIVEWAY
CW - CONCRETE WALL	UN - UNDERSIDE OF DRIVEWAY
CX - CONCRETE WINDOW	UO - UNDERSIDE OF DRIVEWAY
CY - CONCRETE YARD	UP - UNDERSIDE OF DRIVEWAY
CZ - CONCRETE ZONE	UQ - UNDERSIDE OF DRIVEWAY

**LEGEND OF TYPICAL SERVICES**

C - COMMUNICATIONS CABLE	FW - RECYCLED WATER
CWP - CERAMIC WATER PIPE	FW - RECYCLED WATER
E - UNDERGROUND ELECTRICITY	FW - RECYCLED WATER
EL - UNDERGROUND ELECTRICITY A	FW - RECYCLED WATER
EP - UNDERGROUND ELECTRICITY B	FW - RECYCLED WATER
FC - UNDERGROUND ELECTRICITY C	FW - RECYCLED WATER
FD - UNDERGROUND ELECTRICITY D	FW - RECYCLED WATER
FE - UNDERGROUND ELECTRICITY E	FW - RECYCLED WATER
FF - UNDERGROUND ELECTRICITY F	FW - RECYCLED WATER
FG - UNDERGROUND ELECTRICITY G	FW - RECYCLED WATER
FH - UNDERGROUND ELECTRICITY H	FW - RECYCLED WATER
FI - UNDERGROUND ELECTRICITY I	FW - RECYCLED WATER
FJ - UNDERGROUND ELECTRICITY J	FW - RECYCLED WATER
FK - UNDERGROUND ELECTRICITY K	FW - RECYCLED WATER
FL - UNDERGROUND ELECTRICITY L	FW - RECYCLED WATER
FM - UNDERGROUND ELECTRICITY M	FW - RECYCLED WATER
FN - UNDERGROUND ELECTRICITY N	FW - RECYCLED WATER
FO - UNDERGROUND ELECTRICITY O	FW - RECYCLED WATER
FP - UNDERGROUND ELECTRICITY P	FW - RECYCLED WATER
FQ - UNDERGROUND ELECTRICITY Q	FW - RECYCLED WATER
FR - UNDERGROUND ELECTRICITY R	FW - RECYCLED WATER
FS - UNDERGROUND ELECTRICITY S	FW - RECYCLED WATER
FT - UNDERGROUND ELECTRICITY T	FW - RECYCLED WATER
FU - UNDERGROUND ELECTRICITY U	FW - RECYCLED WATER
FV - UNDERGROUND ELECTRICITY V	FW - RECYCLED WATER
FW - UNDERGROUND ELECTRICITY W	FW - RECYCLED WATER
FX - UNDERGROUND ELECTRICITY X	FW - RECYCLED WATER
FY - UNDERGROUND ELECTRICITY Y	FW - RECYCLED WATER
FZ - UNDERGROUND ELECTRICITY Z	FW - RECYCLED WATER

- ALL UNDERGROUND SERVICE INFORMATION INCLUSIVE OF GENERAL POSITION AND SURFACE COVER DEPICTED IN THIS PLAN ARE APPROXIMATIONS ONLY
- ALL UNDERGROUND SERVICE INFORMATION HAS BEEN COMPILED FROM SERVICE AUTHORITY PLANS PROVIDED BY THE AUTHORITIES
- THE LOCATION OF SERVICES BETWEEN SURVEYED POINTS (SEE NOTES) HAS BEEN SHOWN DIAGNOSTICALLY ONLY USING THE SERVICES SHOWN AS PROVIDED. THE EXACT LOCATION OF THESE SERVICES BETWEEN THE SURVEYED POINTS MUST BE VERIFIED PRIOR TO ANY EXCAVATION OR WORKING OF ANY KIND AND MUST BE THE RESPONSIBILITY OF THE CONTRACTOR OF FURTHER WORKS SERVICES
- ALL CONDUITS, TRENCHES, BUNDLES & PIPES MUST BE IDENTIFIED AND MARKED PRIOR TO ANY EXCAVATION OR WORKING OF ANY KIND AND MUST BE THE RESPONSIBILITY OF THE CONTRACTOR OF FURTHER WORKS SERVICES

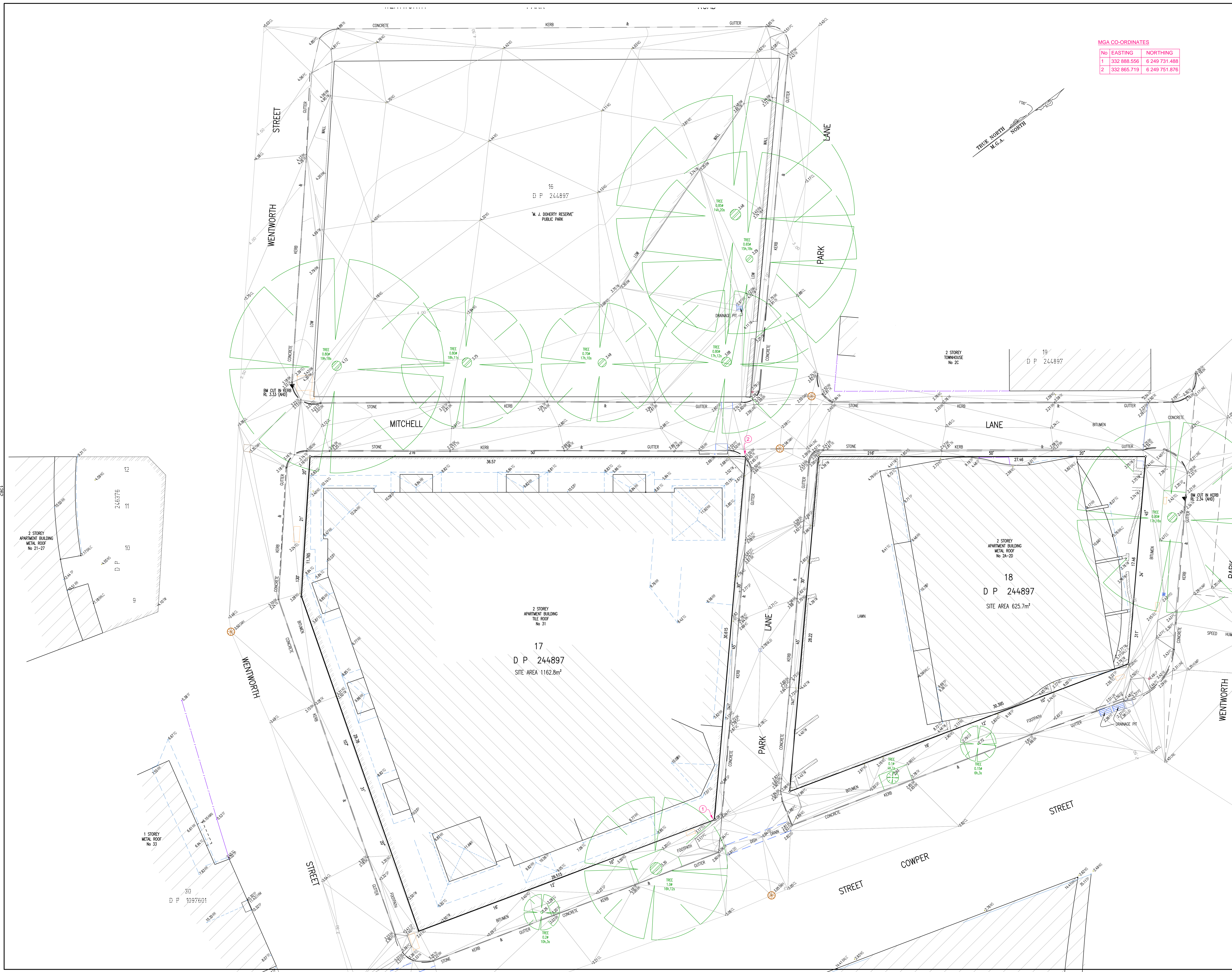


CLIENT: NSW LAND & HOUSING CORP

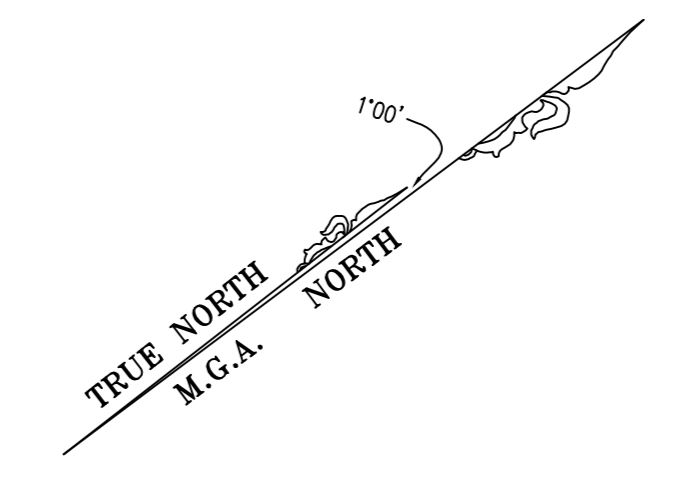
TITLE No: 17 & 18/244897	REF: 201704
DATUM: A.M.D.	ISSUE: 2
DATE OF SURVEY: 15.08.19	ISSUE DATE: 10.08.19
SURVEYOR: SC	SHEET SIZE: A0
DRAFTER: PH	SHEET 4 OF 6 SHEETS

**PLAN OF DETAIL & LEVELS AT No 2 WENTWORTH PARK ROAD GLEBE**

Veris Australia Pty Ltd  
Suite 301, Level 3, 55 Holt Street  
Surry Hills NSW 2012  
PO Box 1807  
Strawberry Hills NSW 2012  
t: (02) 92124655  
email: surryhills@veris.com.au  
web site: www.veris.com.au



MGA CO-ORDINATES		
No	EASTING	NORTHING
1	332 888.556	6 249 731.488
2	332 865.719	6 249 751.876



ISSUE	DATE	AMENDMENT	BY
2	08.04.2020	MGA CO-ORDINATES ADDED	MW/DW

- TYPICAL NOTES:**
- ORDER OF LEVELS PER A2322, RL A1.130 (ROAD)
  - BOUNDARIES ARE ON MGA NORTH
  - NO BOUNDARY SURVEY HAS BEEN UNDERTAKEN
  - BOUNDARIES & DIMENSIONS HAVE BEEN COMPARED FROM TITLE AND/OR DEED INFORMATION SUPPLIED BY DEPARTMENT OF LANDS & WATER
  - RECONSTRUCTION OF APPROXIMATIONS AND DETAIL TO BOUNDARIES & DIMENSIONS ONLY AND SPECIFIC DETAILS OF CRITICAL WALL REQUIRE FURTHER SURVEY
  - SPREADS SHOWN ARE BASED ON WEIR SURFACE INDICATORS EXISTENT AT THE DATE OF SURVEY AND THE RELEASED SURFACE DRAINAGE OF THE AREAS ADJACENT. ALL SPREADS MUST BE VERIFIED ON SITE PRIOR TO ANY WORK BEING UNDERTAKEN. VERIS AUSTRALIA PTY LTD TAKES NO RESPONSIBILITY FOR THE ACCURACY OR COMPLETENESS OF THE SPREADS SHOWN HEREON.
  - RIPEL, DATE & GUTTER HEIGHTS HAVE BEEN OBTAINED BY AN INDIRECT METHOD AND ARE ACCURATE FOR PLANNING PURPOSES ONLY
  - ALONGSIDE BUILDINGS AND DWELLINGS HAVE BEEN PLOTTED FOR DIAGNOSTIC PURPOSES ONLY AND SPECIFIC DETAILS OF CRITICAL WALL REQUIRE FURTHER SURVEY
  - THE DIAMETER (Ø), SPREAD (S) & HEIGHT (H) OF EACH TREE IS INDICATIVE ONLY AND SPECIFIC DETAILS OF CRITICAL WALL REQUIRE FURTHER SURVEY
  - CONTOURS ARE AN INDICATION OF THE TERRAIN ONLY. SPOT LEVELS SHOULD BE USED IF DETAILED DESIGN IS TO BE UNDERTAKEN
  - CONTOUR INTERVAL 0.10 METRE

**LEGEND OF TYPICAL CODES**

AC	ARCHITECTURAL EMBELLISHMENT	MUD	METAL LEE
AL	ALLOYMENT PIN	MS	MASONRY SURFACE
AN	ANNING	OCC	STRUCTURE
AP	APPROACH	OPT	OPTIC FIT
AW	AWNING	PC	FRAM CROSSING
BA	BOTTOM OF BANK	PED	PEDESTAL CROSSING
BB	BOTTOM OF ANNING	PEGS	PEDESTAL MARK
BC	BOTTOM OF CHIMNEY	PM	POWER MARK
BD	BOTTOM OF CHIMNEY	PP	POWER POLE
BE	BOTTOM OF DOOR	PK	POLE
BF	BOUNDARY	PL	CONCRETE WALL
BH	BOTTOM OF HORIZONTAL BRIMEN	PLW	RAILWAY
BI	BOTTOM OF KERB	RM	REFERENCE MARK
BJ	BULLDOZER	RO	ROCK
BK	BOLLARD	ROB	ROOF
BL	BOTTOM OF BANK	SIR	SHRUB
BM	BOTTOM OF RETAINING WALL	SI	SEWER INSPECTION PIT
BN	BOTTOM OF ANNING	SLH	SEWER LAMP HOLE
BO	BOTTOM OF STEPS	SP	SPAL POST
BP	BOTTOM OF BANK	SSM	STEEL SHIMMY MARK
BS	BOTTOM OF ANNING	STW	STONE WALL
BW	BOTTOM OF WINDOW	SV	STOP VALVE
BU	BOTTOM OF ANNING	SW	STOP WATER
BUW	BOTTOM OF WINDOW	TA	TOP OF ANNING
CA	CANTILEVER	TACW	TOP OF ARCH
CD	CEILING	TD	TELESTRA MARK
CE	CEILING LID	TE	TELESTRA PILLAR
CO	COLLUM	TF	TOP OF FENCE
COA	CONCRETE	TG	TOP OF GUTTER
COF	CONCRETE	TH	TOP OF HANDRAIL
COH	CONCRETE	TI	TOP OF KERB
COI	CONCRETE	TL	TRAFFIC ISLAND
COJ	CONCRETE	TR	TOP OF PARAPET
COK	CONCRETE	TRW	TOP OF ROOF
COL	CONCRETE	TRW	TOP OF RETAINING WALL
COM	COMMUNICATIONS PIT	TU	TOP OF WALL
CON	CONCRETE	TWN	TOP OF WINDOW
COO	CONCRETE	UB	UNDERSIDE OF ANNING
COU	CONCRETE	UBW	UNDERSIDE OF BANK
COV	CONCRETE	UC	UNKNOWN SERVICE
COX	CONCRETE	UCB	UNDERSIDE OF BEAM
COY	CONCRETE	UCW	UNDERSIDE OF WINDOW
COZ	CONCRETE	UE	UNDERSIDE OF EASE
CP	CORNER	UH	UNDERSIDE OF HORIZONTAL
CPA	CORNER	UI	UNKNOWN SERVICE
CPB	CORNER	UL	UNDERSIDE OF LANTERN
CPD	CORNER	UM	UNDER SIDE OF GUTTER
CPH	CORNER	UN	UNKNOWN SERVICE
CPJ	CORNER	UP	UNDER SIDE OF PARAPET
CPK	CORNER	UR	UNKNOWN SERVICE
CPM	CORNER	US	UNDER SIDE OF STEEL
CPN	CORNER	UV	UNKNOWN SERVICE
CPP	CORNER	UC	UNKNOWN SERVICE
CPQ	CORNER	VC	VEHICLE CROSSING
CPR	CORNER	VM	VEHICLE MARK
CPS	CORNER	WM	WATER METER
CPV	CORNER		
CPW	CORNER		
CPX	CORNER		
CPY	CORNER		
CPZ	CORNER		

**LEGEND OF TYPICAL SERVICES**

C	COMMUNICATIONS CABLE	RW	RECYCLED WATER
CW	CERAMIC WATER	RM	ROBE MARK
CE	CERAMIC WATER	RS	ROAD & WHITE MARKS
EL	UNDERGROUND ELECTRICITY	S	SEWER
ELW	UNDERGROUND ELECTRICITY W	SO	SEWER OVERALL
ELX	UNDERGROUND ELECTRICITY X	SI	SHARED TRENCH
FW	FIRE SERVICE	SM	STONE METER
G	GAS LINE	STW	STONEWATER CREEK
GL	GAS LINE & ELECTRICITY CABLES	T	TELSTRA CABLES
GLW	GAS LINE & ELECTRICITY CABLES	TD	TELSTRA & GAS CABLES
GLX	GAS LINE & ELECTRICITY CABLES	U	UNKNOWN SERVICE
MC	MATERIAL GAS LINE	UC	UNKNOWN SERVICE
OC	OPENING CABLES	UCB	UNDER SIDE OF BEAM
OP	OPTIC CABLE	UCW	UNDER SIDE OF WINDOW
OPT	OPTIC CABLE	UE	UNDER SIDE OF EASE
PS	PRIVATE SEWER	UH	UNDER SIDE OF HORIZONTAL
PS	PRIVATE SEWER	UI	UNKNOWN SERVICE
PS	PRIVATE SEWER	UL	UNDER SIDE OF LANTERN
PS	PRIVATE SEWER	UM	UNDER SIDE OF GUTTER
PS	PRIVATE SEWER	UN	UNKNOWN SERVICE
PS	PRIVATE SEWER	UP	UNDER SIDE OF PARAPET
PS	PRIVATE SEWER	UR	UNKNOWN SERVICE
PS	PRIVATE SEWER	US	UNDER SIDE OF STEEL
PS	PRIVATE SEWER	UV	UNKNOWN SERVICE
PS	PRIVATE SEWER	UC	UNKNOWN SERVICE
PS	PRIVATE SEWER	VC	VEHICLE CROSSING
PS	PRIVATE SEWER	VM	VEHICLE MARK
PS	PRIVATE SEWER	WM	WATER METER

- ALL UNDERGROUND SERVICE INFORMATION INCLUDING OF GENERAL POSITION AND SURFACE COVER DEPTH IS BASED ON THE DATA AS PROVIDED.
- ALL UNDERGROUND SERVICE INFORMATION HAS BEEN COMPARED FROM SERVICE AUTHORITY PLANS PROVIDED BY THE AUTHORITIES.
- THE LOCATION OF SERVICES BETWEEN SURVEYED POINTS (AS INDICATED) HAS BEEN SHOWN INDICATIVELY ONLY. THE EXACT LOCATION OF THESE SERVICES BETWEEN THE SURVEYED POINTS MUST BE VERIFIED PRIOR TO ANY EXCAVATION OR WORK. NO WARRANTY IS MADE AS TO THE POSITION OF THE COORDINATE OF SURVEYED POINTS.
- ALL CONSTRUCTION SERVICES, INCLUDING A PROJECT CONSULTANT MUST CONTACT THE RELEVANT AUTHORITIES, IN ACCORDANCE WITH STANDARD TIA, BEFORE ANY WORK COMMENCES PRIOR TO UNDERMINING ANY SERVICE. WHERE THE SERVICE OWNERS TO VERIFY THE POSITION OF THE SERVICE LINE.

Liability limited by a scheme approved under Professional Standards Legislation

REDUCTION RATIO 1:100

0 1 2 3 4 5 6 7 8 9 10  
LENGTHS ARE IN METRES

CLIENT: NSW LAND & HOUSING CORP

TITLE No: 17 & 18/244897 REF: 201704  
 DATUM: A.H.D. ISSUE: 2  
 DATE OF SURVEY: 15.08.19 ISSUE DATE: 19.08.19  
 SURVEYOR: SC SHEET SIZE: A0  
 DRAFTER: PH SHEET 5 OF 6 SHEETS

**PLAN OF DETAIL & LEVELS AT No 2 WENTWORTH PARK ROAD GLEBE**

Veris Australia Pty Ltd  
 Suite 301, Level 3, 55 Holt Street  
 Surry Hills NSW 2012  
 PO Box 1807  
 Strawberry Hills NSW 2012  
 t: (02) 9212 4655  
 email: surryhills@veris.com.au  
 web site: www.veris.com.au

